



# Recombinant Mouse C3a

<b>Catalog #</b>	EPT296
<b>Expression Host</b>	E.coli
<b>DESCRIPTION</b>	Recombinant Mouse Complement Component C3a is produced by our E.coli expression system and the target gene encoding Ser671-Arg748 is expressed.
<b>Accession</b>	P01027
<b>Synonyms</b>	Complement Component C3a; Anaphylatoxin; C3a
<b>Mol Mass</b>	9.2 KDa
<b>AP Mol Mass</b>	9 KDa, reducing conditions
<b>Purity</b>	Greater than 95% as determined by reducing SDS-PAGE.
<b>Endotoxin</b>	Less than 0.1 ng/μg (1 EU/μg) as determined by LAL test.
<b>FORMULATION</b>	Lyophilized from a 0.2 μm filtered solution of PBS, pH 7.4.
<b>RECONSTITUTION</b>	Always centrifuge tubes before opening. Do not mix by vortex or pipetting.  It is not recommended to reconstitute to a





concentration less than 100 $\mu$ g/ml.

Dissolve the lyophilized protein in distilled water.

Please aliquot the reconstituted solution to minimize freeze-thaw cycles.

## SHIPPING

The product is shipped at ambient temperature.

Upon receipt, store it immediately at the temperature listed below.

## STORAGE

Lyophilized protein should be stored at  $< -20^{\circ}\text{C}$ , though stable at room temperature for 3 weeks.

Reconstituted protein solution can be stored at  $4-7^{\circ}\text{C}$  for 2-7 days.

Aliquots of reconstituted samples are stable at  $< -20^{\circ}\text{C}$  for 3 months.

## BACKGROUND

Complement is defined as key part of innate immunity and as the first line of defense in the fight against invading pathogens. Complement 3 (C3) is the most abundant component of the complement cascade and the convergent point for all three major complement activation pathways: namely classical, alternative and mannose-binding lectin pathways. Complement activation leads to the formation of the C3 convertase, which cleaves C3 into the key effector molecules, C3a

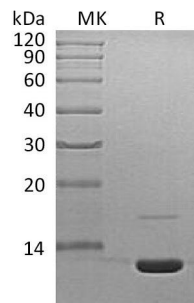




**ELK Biotechnology**

(anaphylatoxin) and C3b (opsonin) which then drive microbe removal. By binding to C3a receptor (C3aR), C3a exhibits potent anaphylatoxin activity, including increased vascular permeability, triggering degranulation of mast cells, inflammation, and activating leukocytes.

## SDS-PAGE



+86-27-59760950

ELKbio@ELKbiotech.com

www.elkbiotech.com

23-2, No.388 Gaoxin 2nd Road, Wuhan East Lake Hi-tech Development Zone, Hubei, P.R.C