



Recombinant Human MetAP1D (N, C-6His)

| | |
|------------------------|--|
| Catalog # | EPT270 |
| Expression Host | E.coli |
| DESCRIPTION | Recombinant Human Methionine Aminopeptidase 1D Mitochondrial is produced by our E.coli expression system and the target gene encoding Arg44-Ala335 is expressed with a 6His tag at the N-terminus, 6His tag at the C-terminus. |
| Accession | Q6UB28 |
| Synonyms | Methionine Aminopeptidase 1D Mitochondrial; Methionyl Aminopeptidase Type 1D Mitochondrial; METAP1D; MAP1D |
| Mol Mass | 35.4 KDa |
| AP Mol Mass | 35-40 KDa, reducing conditions |
| Purity | Greater than 95% as determined by reducing SDS-PAGE. |
| Endotoxin | Less than 0.1 ng/μg (1 EU/μg) as determined by LAL test. |





FORMULATION

Supplied as a 0.2 μ m filtered solution of 20mM Tris-HCl, pH 8.0.

RECONSTITUTION

SHIPPING

The product is shipped on dry ice/polar packs.

Upon receipt, store it immediately at the temperature listed below.

STORAGE

Store at $\leq -70^{\circ}\text{C}$, stable for 6 months after receipt.

Store at $\leq -70^{\circ}\text{C}$, stable for 3 months under sterile conditions after opening.

Please minimize freeze-thaw cycles.

BACKGROUND

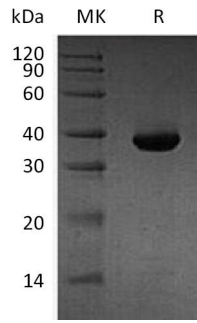
Methionine Aminopeptidase 1D (METAP1D) is a mitochondrion protein that belongs to the peptidase M24A family. METAP1D is overexpressed at the protein level in colon cancer cell lines and colon tumors as compared to normal tissues. N-terminal methionine removal is an important cellular process required for proper biological activity, subcellular localization, and eventual degradation of many proteins. METAP1D is also active with zinc, manganese or divalent ions. It may also play an important role in colon tumorigenesis.





ELK Biotechnology

SDS-PAGE



+86-27-59760950

ELKbio@ELKbiotech.com

www.elkbiotech.com

23-2, No.388 Gaoxin 2nd Road, Wuhan East Lake Hi-tech Development Zone, Hubei, P.R.C