



# HSP70 (Acetyl Lys246) rabbit pAb

Cat No.:ES1136

For research use only

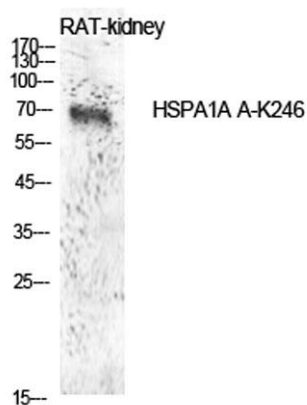
## Overview

|                                 |   |
|---------------------------------|---|
| <b>Product Name</b>             | HSP70 (Acetyl Lys246) rabbit pAb  |
| <b>Host species</b>             | Rabbit  |
| <b>Applications</b>             | WB;ELISA  |
| <b>Species Cross-Reactivity</b> | Human;Rat;Mouse;  |
| <b>Recommended dilutions</b>    | Western Blot: 1/500 - 1/2000. ELISA: 1/10000. Not yet tested in other applications.   |
| <b>Immunogen</b>                | Synthesized acetyl-peptide derived from the Internal region of human HSP70 around the acetylation site of K246.   |
| <b>Specificity</b>              | Acetyl-HSP70 (K246) Polyclonal Antibody detects endogenous levels of HSP70 protein only when acetylation at K246.   |
| <b>Formulation</b>              | Liquid in PBS containing 50% glycerol, 0.5% BSA and 0.02% sodium azide.   |
| <b>Storage</b>                  | Store at -20°C. Avoid repeated freeze-thaw cycles.  |
| <b>Protein Name</b>             | Heat shock 70 kDa protein 1A/1B   |
| <b>Gene Name</b>                | HSPA1A  |
| <b>Cellular localization</b>    | Cytoplasm . Nucleus . Cytoplasm, cytoskeleton, microtubule organizing center, centrosome . Secreted . Localized in cytoplasmic mRNP granules containing untranslated mRNAs. |
| <b>Purification</b>             | The antibody was affinity-purified from rabbit antiserum by affinity-chromatography using epitope-specific immunogen.   |
| <b>Clonality</b>                | Polyclonal  |
| <b>Concentration</b>            | 1 mg/ml   |
| <b>Observed band</b>            | 70kD  |
| <b>Human Gene ID</b>            | 3303/3304   |
| <b>Human Swiss-Prot Number</b>  | PODMV8/PODMV9   |
| <b>Alternative Names</b>        | HSPA1A; HSPA1; HSPA1B; Heat shock 70 kDa protein 1A/1B; Heat shock 70 kDa protein 1/2; HSP70-1/HSP70-2; HSP70.1/HSP70.2   |
| <b>Background</b>               | This intronless gene encodes a 70kDa heat shock   |

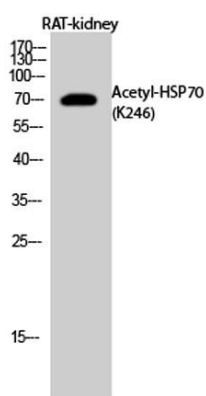




protein which is a member of the heat shock protein 70 family. In conjunction with other heat shock proteins, this protein stabilizes existing proteins against aggregation and mediates the folding of newly translated proteins in the cytosol and in organelles. It is also involved in the ubiquitin-proteasome pathway through interaction with the AU-rich element RNA-binding protein 1. The gene is located in the major histocompatibility complex class III region, in a cluster with two closely related genes which encode similar proteins. [provided by RefSeq, Jul 2008],



Western Blot analysis of rat kidney cells using Acetyl-HSP70 (K246) Polyclonal Antibody. Antibody was diluted at 1:1000. Secondary antibody(catalog#:RS0002) was diluted at 1:20000



Western Blot analysis of RAT-kidney cells using Acetyl-HSP70 (K246) Polyclonal Antibody diluted at 1:1000. Secondary antibody(catalog#:RS0002) was diluted at 1:20000

