



NF-E4 (Acetyl Lys43) rabbit pAb

Cat No.:ES1124

For research use only

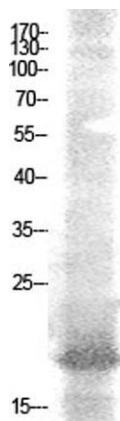
Overview

Product Name	NF-E4 (Acetyl Lys43) rabbit pAb
Host species	Rabbit
Applications	WB;ELISA;IHC
Species Cross-Reactivity	Human;Rat;Mouse;
Recommended dilutions	WB 1:500-2000;IHC-p 1:50-300; ELISA 2000-20000
Immunogen	Synthesized acetyl-peptide derived from the human NF-E4 around the acetylation site of K43.
Specificity	Acetyl-NF-E4 (K43) Polyclonal AntibodySynthesized peptide derived from the human NF-E4 around the acetylation site of K43.
Formulation	Liquid in PBS containing 50% glycerol, 0.5% BSA and 0.02% sodium azide.
Storage	Store at -20°C. Avoid repeated freeze-thaw cycles.
Protein Name	Transcription factor NF-E4
Gene Name	NFE4
Cellular localization	Nucleus .
Purification	The antibody was affinity-purified from rabbit antiserum by affinity-chromatography using epitope-specific immunogen.
Clonality	Polyclonal
Concentration	1 mg/ml
Observed band	19kD
Human Gene ID	58160
Human Swiss-Prot Number	Q86UQ8
Alternative Names	NFE4; Transcription factor NF-E4
Background	The erythroid-specific protein encoded by this gene, and the ubiquitous transcription factor CP2, form the stage selector protein (SSP) complex, which is involved in preferential expression of the gamma-globin genes in fetal erythroid cells. Alternate use of an in-frame upstream non-AUG (CUG) translation initiation codon, and a downstream AUG codon, results in two isoforms.

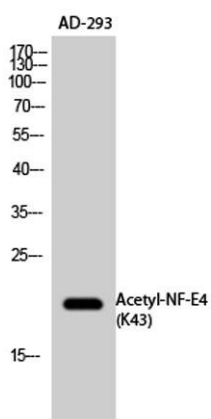




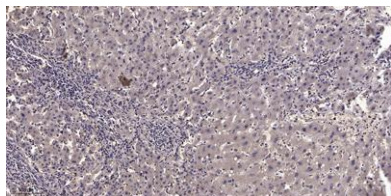
While the long isoform (22 kDa) acts as an activator, the short isoform (14 kDa) has been shown to repress gamma-globin gene expression. This gene is located in an intron of the FBXL13 gene on the opposite strand. [provided by RefSeq, Jul 2008],



Western Blot analysis of AD-293 cells using Acetyl-NF-E4 (K43) Polyclonal Antibody. Secondary antibody(catalog#:RS0002) was diluted at 1:20000



Western Blot analysis of AD-293 cells using Acetyl-NF-E4 (K43) Polyclonal Antibody. Secondary antibody(catalog#:RS0002) was diluted at 1:20000



Immunohistochemical analysis of paraffin-embedded human liver cancer. 1, Antibody was diluted at 1:200(4° overnight). 2, Tris-EDTA,pH9.0 was used for antigen retrieval. 3,Secondary antibody was diluted at 1:200(room temperature, 45min).

