



Cytokeratin-pan (Acetyl Lys194) rabbit pAb

Cat No.:ES1117

For research use only

Overview

Product Name	Cytokeratin-pan (Acetyl Lys194) rabbit pAb
Host species	Rabbit
Applications	WB;ELISA
Species	Human;Mouse;Rat
Cross-Reactivity	
Recommended dilutions	Western Blot: 1/500 - 1/2000. ELISA: 1/20000. Not yet tested in other applications.
Immuno gen	The antiserum was produced against synthesized Acetyl-peptide derived from human Keratin-pan around the Acetylation site of Lys194. AA range:151-200
Specificity	Acetyl-Cytokeratin-pan (K194) Polyclonal Antibody detects endogenous levels of Cytokeratin protein only when acetylated at K194.
Formula tion	Liquid in PBS containing 50% glycerol, 0.5% BSA and 0.02% sodium azide.
Storage	Store at -20°C. Avoid repeated freeze-thaw cycles.
Protein Name	Keratin type II cytoskeletal 2 epidermal/Keratin type II cytoskeletal 2 oral/Keratin type II cytoskeletal 3/Keratin type II cytoskeletal 5/Keratin type II cytoskeletal 6A
Gene Name	KRT2/KRT76/KRT3/KRT5/KRT6A/KRT6B/KRT6C/KRT71/KRT72/KRT73/KRT74/KRT75/KRT79/KRT8/KRT84
Cellular localization	extracellular space,nucleus,cytoplasm,Golgi apparatus,intermediate filament,membrane,keratin filament,intermediate filament cytoskeleton,extracellular exosome,
Purification	The antibody was affinity-purified from rabbit antiserum by affinity-chromatography using epitope-specific immunogen.
Clonality	Polyclonal





Concentration 1 mg/ml

Observed band 65kD

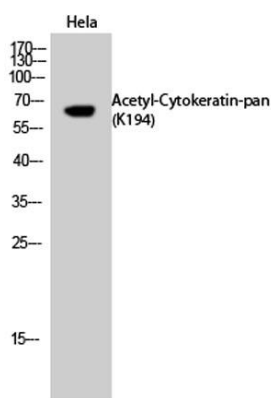
Human Gene ID 3849/51350/3850/3852/3853/3854/286887/112802/140807/319101/121391/9119/338785/3856/3890

Human Swiss-Prot P35908/Q01546/P12035/P13647/P02538/P04259/P48668/Q3SY84/Q14CN4/Q86Y46/Q7RTS7/O95678/Q5XKE5/P08729/P05787/Q9NSB2

Number of Alternatives KRT2; KRT2A; KRT2E; Keratin, type II cytoskeletal 2 epidermal; Cytokeratin-2e; CK-2e; Epithelial keratin-2e; Keratin-2 epidermis;

Names Keratin-2e; K2e; Type-II keratin Kb2; KRT76; KRT2B; KRT2P; Keratin, type II cytoskeletal 2 oral; Cytokeratin-2PCK-2P; K2P; Ke

Background keratin 2(KRT2) Homo sapiens The protein encoded by this gene is a member of the keratin gene family. The type II cytokeratins consist of basic or neutral proteins which are arranged in pairs of heterotypic keratin chains coexpressed during differentiation of simple and stratified epithelial tissues. This type II cytokeratin is expressed largely in the upper spinous layer of epidermal keratinocytes and mutations in this gene have been associated with bullous congenital ichthyosiform erythroderma. The type II cytokeratins are clustered in a region of chromosome 12q12-q13. [provided by RefSeq, Jul 2008],

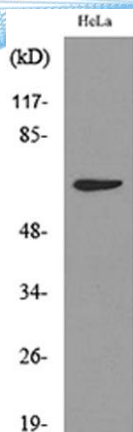


Western Blot analysis of HeLa cells using Acetyl-Cytokeratin-pan (K194) Polyclonal Antibody. Secondary antibody(catalog#:RS0002) was diluted at 1:20000





ELK Biotechnology



Western blot analysis of lysate from HeLa cells, using Keratin-pan (Acetyl-Lys194) Antibody.



+86-27-59760950

ELKbio@ELKbiotech.com

www.elkbiotech.com

23-2, No.388 Gaoxin 2nd Road,Wuhan East Lake Hi-tech Development Zone, Hubei , P.R.C