



Tubulin α (Acetyl Lys352) rabbit pAb

Cat No.:ES1115

For research use only

Overview

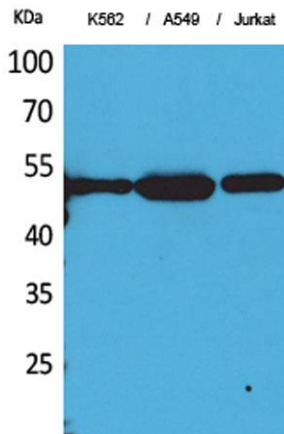
Product Name	Tubulin α (Acetyl Lys352) rabbit pAb
Host species	Rabbit
Applications	WB;ELISA
Species Cross-Reactivity	Human;Mouse;Rat
Recommended dilutions	Western Blot: 1/500 - 1/2000. ELISA: 1/20000. Not yet tested in other applications.
Immunogen	The antiserum was produced against synthesized Acetyl-peptide derived from human TUBA1B around the Acetylation site of Lys352. AA range:311-360
Specificity	Acetyl-Tubulin α (K352) Polyclonal Antibody detects endogenous levels of Tubulin α protein only when acetylated at K352.
Formulation	Liquid in PBS containing 50% glycerol, 0.5% BSA and 0.02% sodium azide.
Storage	Store at -20°C. Avoid repeated freeze-thaw cycles.
Protein Name	Tubulin alpha-1A chain/Tubulin alpha-1B chain/Tubulin alpha-1C chain/Tubulin alpha-3C/D chain/Tubulin alpha-4A chain/Tubulin alpha-8 chain
Gene Name	TUBA1A/TUBA1B/TUBA1C/TUBA3C/TUBA4A/TUBA8
Cellular localization	Cytoplasm, cytoskeleton.
Purification	The antibody was affinity-purified from rabbit antiserum by affinity-chromatography using epitope-specific immunogen.
Clonality	Polyclonal
Concentration	1 mg/ml
Observed band	50kD
Human Gene ID	7846
Human Swiss-Prot Number	Q71U36
Alternative Names	TUBA1A; TUBA3; Tubulin alpha-1A chain; Alpha-tubulin 3; Tubulin B-alpha-1; Tubulin alpha-3 chain; TUBA1B; Tubulin alpha-1B chain; Alpha-tubulin ubiquitous; Tubulin K-alpha-1; Tubulin alpha-ubiquitous chain; TUBA1C; TUBA6;Tubulin



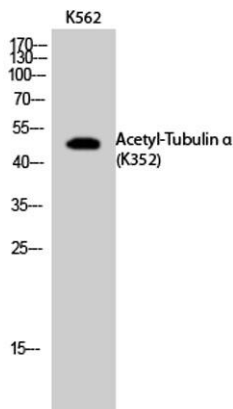


Background

alpha-6 chain; TUBA3C; TUB
Microtubules of the eukaryotic cytoskeleton perform essential and diverse functions and are composed of a heterodimer of alpha and beta tubulins. The genes encoding these microtubule constituents belong to the tubulin superfamily, which is composed of six distinct families. Genes from the alpha, beta and gamma tubulin families are found in all eukaryotes. The alpha and beta tubulins represent the major components of microtubules, while gamma tubulin plays a critical role in the nucleation of microtubule assembly. There are multiple alpha and beta tubulin genes, which are highly conserved among species. This gene encodes alpha tubulin and is highly similar to the mouse and rat Tuba1 genes. Northern blotting studies have shown that the gene expression is predominantly found in morphologically differentiated neurologic cells. This gene is one of three alpha-tubulin genes in a cluster on chromosome 12q.



Western Blot analysis of K562, A549, Jurkat cells using Acetyl-Tubulin α (K352) Polyclonal Antibody. Secondary antibody(catalog#:RS0002) was diluted at 1:20000

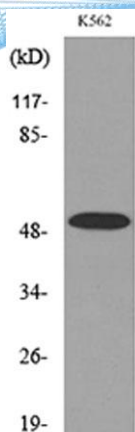


Western Blot analysis of K562 cells using Acetyl-Tubulin α (K352) Polyclonal Antibody. Secondary antibody(catalog#:RS0002) was diluted at 1:20000





ELK Biotechnology



Western blot analysis of lysate from K562 cells, using TUBA1B (Acetyl-Lys352) Antibody.



+86-27-59760950

ELKbio@ELKbiotech.com

www.elkbiotech.com

23-2, No.388 Gaoxin 2nd Road,Wuhan East Lake Hi-tech Development Zone, Hubei , P.R.C