



Cleaved-Thrombin APII (R327) rabbit pAb

Cat No.:ES1055

For research use only

Overview

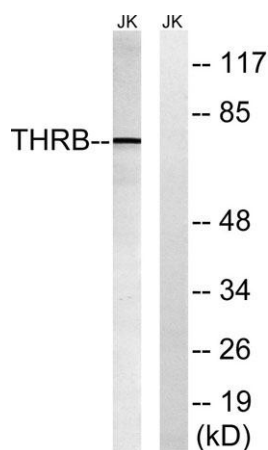
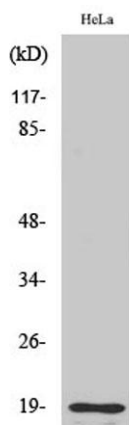
Product Name	Cleaved-Thrombin APII (R327) rabbit pAb
Host species	Rabbit
Applications	WB;ELISA
Species Cross-Reactivity	Human;Rat;Mouse;
Recommended dilutions	Western Blot: 1/500 - 1/2000. ELISA: 1/20000. Not yet tested in other applications.
Immunogen	The antiserum was produced against synthesized peptide derived from human THRB. AA range:278-327
Specificity	Cleaved-Thrombin APII (R327) Polyclonal Antibody detects endogenous levels of fragment of activated Thrombin APII protein resulting from cleavage adjacent to R327.
Formulation	Liquid in PBS containing 50% glycerol, 0.5% BSA and 0.02% sodium azide.
Storage	Store at -20°C. Avoid repeated freeze-thaw cycles.
Protein Name	Prothrombin
Gene Name	F2
Cellular localization	Secreted, extracellular space.
Purification	The antibody was affinity-purified from rabbit antiserum by affinity-chromatography using epitope-specific immunogen.
Clonality	Polyclonal
Concentration	1 mg/ml
Observed band	19kD
Human Gene ID	2147
Human Swiss-Prot Number	P00734
Alternative Names	F2; Prothrombin; Coagulation factor II
Background	Coagulation factor II is proteolytically cleaved to form thrombin in the first step of the coagulation cascade which ultimately results in the stemming of blood loss. F2 also plays a role in maintaining vascular integrity during development and postnatal





life. Peptides derived from the C-terminus of this protein have antimicrobial activity against *E. coli* and *P. aeruginosa*. Mutations in F2 lead to various forms of thrombosis and dysprothrombinemia. Alternative splicing results in multiple transcript variants. [provided by RefSeq, Aug 2015],

Western Blot analysis of various cells using Cleaved-Thrombin APII (R327) Polyclonal Antibody



Western blot analysis of lysates from Jurkat cells, treated with etoposide 25uM 24H, using THRB (AP2,Cleaved-Arg327) Antibody. The lane on the right is blocked with the synthesized peptide.

