



Cleaved-MMP-12 (G106) rabbit pAb

Cat No.:ES1043

For research use only

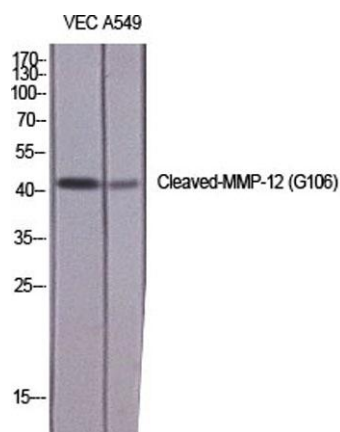
Overview

Product Name	Cleaved-MMP-12 (G106) rabbit pAb
Host species	Rabbit
Applications	WB;ELISA
Species Cross-Reactivity	Human;Rat;Mouse;
Recommended dilutions	Western Blot: 1/500 - 1/2000. ELISA: 1/20000. Not yet tested in other applications.
Immunogen	The antiserum was produced against synthesized peptide derived from human MMP12. AA range:87-136
Specificity	Cleaved-MMP-12 (G106) Polyclonal Antibody detects endogenous levels of fragment of activated MMP-12 protein resulting from cleavage adjacent to G106.
Formulation	Liquid in PBS containing 50% glycerol, 0.5% BSA and 0.02% sodium azide.
Storage	Store at -20°C. Avoid repeated freeze-thaw cycles.
Protein Name	Macrophage metalloelastase
Gene Name	MMP12
Cellular localization	Secreted, extracellular space, extracellular matrix .
Purification	The antibody was affinity-purified from rabbit antiserum by affinity-chromatography using epitope-specific immunogen.
Clonality	Polyclonal
Concentration	1 mg/ml
Observed band	42kD
Human Gene ID	4321
Human Swiss-Prot Number	P39900
Alternative Names	MMP12; HME; Macrophage metalloelastase; MME; Macrophage elastase; ME; hME; Matrix metalloproteinase-12; MMP-12
Background	This gene encodes a member of the peptidase M10 family of matrix metalloproteinases (MMPs). Proteins in this family are involved in the breakdown

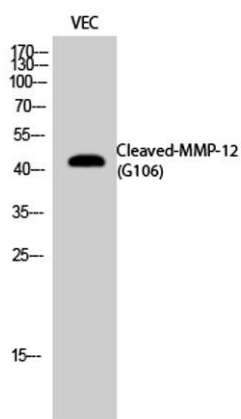




of extracellular matrix in normal physiological processes, such as embryonic development, reproduction, and tissue remodeling, as well as in disease processes, such as arthritis and metastasis. The encoded preproprotein is proteolytically processed to generate the mature protease. This protease degrades soluble and insoluble elastin. This gene may play a role in aneurysm formation and mutations in this gene are associated with lung function and chronic obstructive pulmonary disease (COPD). This gene is part of a cluster of MMP genes on chromosome 11. [provided by RefSeq, Jan 2016],



Western Blot analysis of various cells using Cleaved-MMP-12 (G106) Polyclonal Antibody diluted at 1:1000

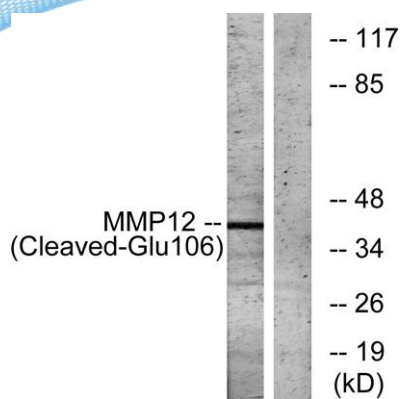


Western Blot analysis of VEC cells using Cleaved-MMP-12 (G106) Polyclonal Antibody diluted at 1:1000





ELK Biotechnology



Western blot analysis of lysates from NIH/3T3 cells, treated with etoposide 25uM 1h, using MMP12 (Cleaved-Glu106) Antibody. The lane on the right is blocked with the synthesized peptide.



+86-27-59760950

ELKbio@ELKbiotech.com

www.elkbiotech.com

23-2, No.388 Gaoxin 2nd Road,Wuhan East Lake Hi-tech Development Zone, Hubei , P.R.C