



Cleaved-MMP-10 (F99) rabbit pAb

Cat No.:ES1042

For research use only

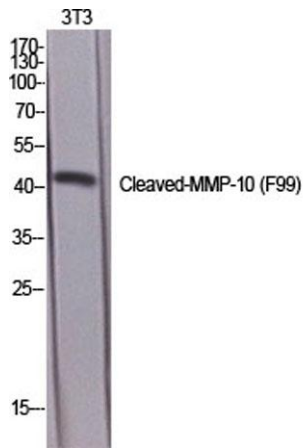
Overview

Product Name	Cleaved-MMP-10 (F99) rabbit pAb
Host species	Rabbit
Applications	WB;ELISA
Species Cross-Reactivity	Human;Rat;Mouse;
Recommended dilutions	Western Blot: 1/500 - 1/2000. ELISA: 1/40000. Not yet tested in other applications.
Immunogen	The antiserum was produced against synthesized peptide derived from human MMP10. AA range:80-129
Specificity	Cleaved-MMP-10 (F99) Polyclonal Antibody detects endogenous levels of fragment of activated MMP-10 protein resulting from cleavage adjacent to F99.
Formulation	Liquid in PBS containing 50% glycerol, 0.5% BSA and 0.02% sodium azide.
Storage	Store at -20°C. Avoid repeated freeze-thaw cycles.
Protein Name	Stromelysin-2
Gene Name	MMP10
Cellular localization	Secreted, extracellular space, extracellular matrix .
Purification	The antibody was affinity-purified from rabbit antiserum by affinity-chromatography using epitope-specific immunogen.
Clonality	Polyclonal
Concentration	1 mg/ml
Observed band	43kD
Human Gene ID	4319
Human Swiss-Prot Number	P09238
Alternative Names	MMP10; STMY2; Stromelysin-2; SL-2; Matrix metalloproteinase-10; MMP-10; Transin-2
Background	This gene encodes a member of the peptidase M10 family of matrix metalloproteinases (MMPs). Proteins in this family are involved in the breakdown of extracellular matrix in normal physiological processes, such as embryonic development,

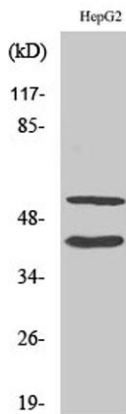




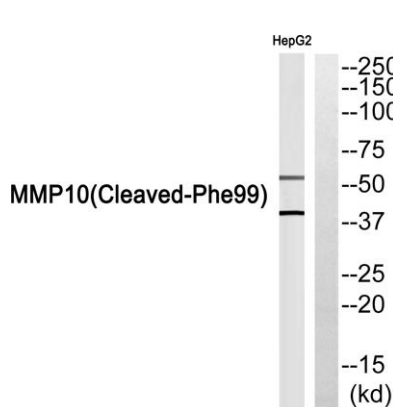
reproduction, and tissue remodeling, as well as in disease processes, such as arthritis and metastasis. The encoded preproprotein is proteolytically processed to generate the mature protease. This secreted protease breaks down fibronectin, laminin, elastin, proteoglycan core protein, gelatins, and several types of collagen. The gene is part of a cluster of MMP genes on chromosome 11. [provided by RefSeq, Jan 2016],



Western Blot analysis of various cells using Cleaved-MMP-10 (F99) Polyclonal Antibody diluted at 1:1000



Western Blot analysis of HepG2 cells using Cleaved-MMP-10 (F99) Polyclonal Antibody diluted at 1:1000



Western blot analysis of MMP10 (Cleaved-Phe99) Antibody. The lane on the right is blocked with the MMP10 (Cleaved-Phe99) peptide.





ELK Biotechnology



+86-27-59760950

ELKbio@ELKbiotech.com

www.elkbiotech.com

23-2, No.388 Gaoxin 2nd Road,Wuhan East Lake Hi-tech Development Zone, Hubei , P.R.C