



# Cleaved-Cathepsin A 32k (R326) rabbit pAb

Cat No.:ES1024

For research use only

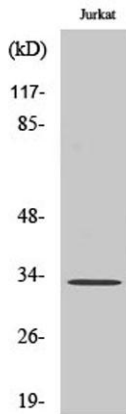
## Overview

<b>Product Name</b>	Cleaved-Cathepsin A 32k (R326) rabbit pAb
<b>Host species</b>	Rabbit
<b>Applications</b>	WB;ELISA
<b>Species Cross-Reactivity</b>	Human;Mouse
<b>Recommended dilutions</b>	Western Blot: 1/500 - 1/2000. ELISA: 1/10000. Not yet tested in other applications.
<b>Immunogen</b>	The antiserum was produced against synthesized peptide derived from human PPGB. AA range:277-326
<b>Specificity</b>	Cleaved-Cathepsin A 32k (R326) Polyclonal Antibody detects endogenous levels of fragment of activated Cathepsin A 32k protein resulting from cleavage adjacent to R326.
<b>Formulation</b>	Liquid in PBS containing 50% glycerol, 0.5% BSA and 0.02% sodium azide.
<b>Storage</b>	Store at -20°C. Avoid repeated freeze-thaw cycles.
<b>Protein Name</b>	Lysosomal protective protein
<b>Gene Name</b>	CTSA
<b>Cellular localization</b>	Lysosome.
<b>Purification</b>	The antibody was affinity-purified from rabbit antiserum by affinity-chromatography using epitope-specific immunogen.
<b>Clonality</b>	Polyclonal
<b>Concentration</b>	1 mg/ml
<b>Observed band</b>	33kD
<b>Human Gene ID</b>	5476
<b>Human Swiss-Prot Number</b>	P10619
<b>Alternative Names</b>	CTSA; PPGB; Lysosomal protective protein; Carboxypeptidase C; Carboxypeptidase L; Cathepsin A; Protective protein cathepsin A; PPCA; Protective protein for beta-galactosidase
<b>Background</b>	This gene encodes a member of the peptidase S10 family of serine carboxypeptidases. Alternative

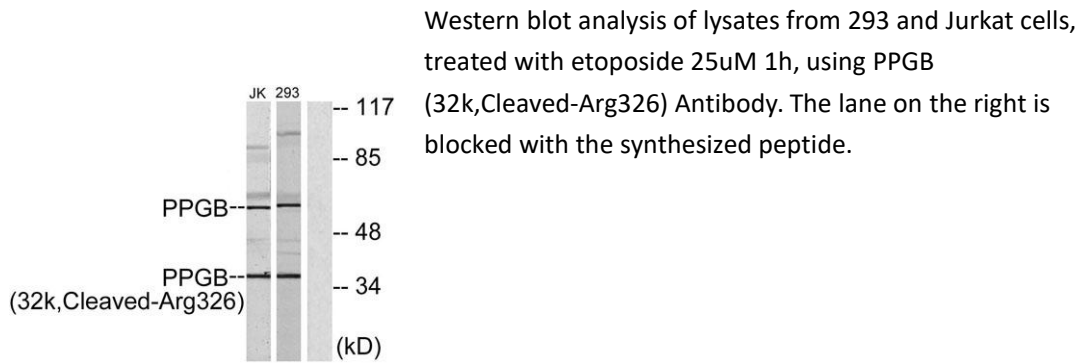




splicing results in multiple transcript variants, at least one of which encodes a preproprotein that is proteolytically processed to generate two chains that comprise the heterodimeric active enzyme. This enzyme possesses deamidase, esterase and carboxypeptidase activities and acts as a scaffold in the lysosomal multienzyme complex. Mutations in this gene are associated with galactosialidosis. [provided by RefSeq, Nov 2015],



Western Blot analysis of various cells using Cleaved-Cathepsin A 32k (R326) Polyclonal Antibody



Western blot analysis of lysates from 293 and Jurkat cells, treated with etoposide 25uM 1h, using PPGB (32k, Cleaved-Arg326) Antibody. The lane on the right is blocked with the synthesized peptide.

