



Cleaved-C1r LC (I464) rabbit pAb

Cat No.:ES1013

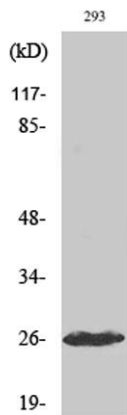
For research use only

Overview

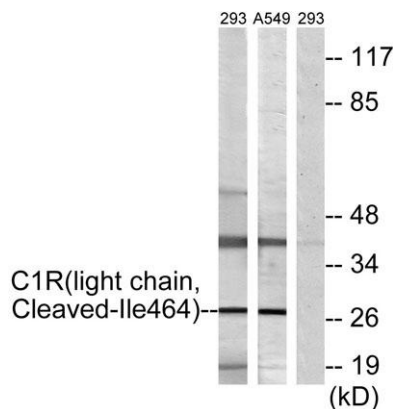
Product Name	Cleaved-C1r LC (I464) rabbit pAb
Host species	Rabbit
Applications	WB;ELISA
Species Cross-Reactivity	Human;Rat;Mouse;
Recommended dilutions	Western Blot: 1/500 - 1/2000. ELISA: 1/20000. Not yet tested in other applications.
Immunogen	The antiserum was produced against synthesized peptide derived from human C1R. AA range:445-494
Specificity	Cleaved-C1r LC (I464) Polyclonal Antibody detects endogenous levels of fragment of activated C1r LC protein resulting from cleavage adjacent to I464.
Formulation	Liquid in PBS containing 50% glycerol, 0.5% BSA and 0.02% sodium azide.
Storage	Store at -20°C. Avoid repeated freeze-thaw cycles.
Protein Name	Complement C1r subcomponent
Gene Name	C1R
Cellular localization	Secreted .
Purification	The antibody was affinity-purified from rabbit antiserum by affinity-chromatography using epitope-specific immunogen.
Clonality	Polyclonal
Concentration	1 mg/ml
Observed band	27kD
Human Gene ID	715
Human Swiss-Prot Number	P00736
Alternative Names	C1R; Complement C1r subcomponent; Complement component 1 subcomponent r
Background	catalytic activity:Selective cleavage of Lys(or Arg)- -Ile bond in complement subcomponent C1s to form the active form of C1s (EC 3.4.21.42).,function:C1r B chain is a serine protease that combines with C1q and C1s to form C1, the first component of the classical pathway of the



complement system.,polymorphism:Complement component C1r deficiency [MIM:216950] leads to the failure of the classical complement system activation pathway (C1 deficiency). Individuals with C1 deficiency are highly susceptible to infections by microorganisms and have greater risk in developing autoimmune diseases such as systemic lupus erythematosus (SLE).,PTM:The iron and 2-oxoglutarate dependent 3-hydroxylation of aspartate and asparagine is (R) stereospecific within EGF domains.,similarity:Belongs to the peptidase S1 family.,similarity:Contains 1 EGF-like domain.,similarity:Contains 1 peptidase S1 domain.,similarity:Contains 2 CUB domains.,similarity:Contains 2 Sushi (CCP/SCR) domains.,subunit:C1 is a calcium-dependent trimolecular complex of C1q, C1r and C1s in the molar ration of 1:2:2. C1r is a dimer of identical chains, each of which is activated by cleavage into two chains, A and B, connected by disulfide bonds.,



Western Blot analysis of various cells using Cleaved-C1r LC (1464) Polyclonal Antibody



Western blot analysis of lysates from 293 and A549 cells, treated with etoposide 25uM 1h, using C1R (light chain, Cleaved-Ile464) Antibody. The lane on the right is blocked with the synthesized peptide.



ELK Biotechnology

