



# ELK Biotechnology

Collagen II (8F6) Mouse mAb

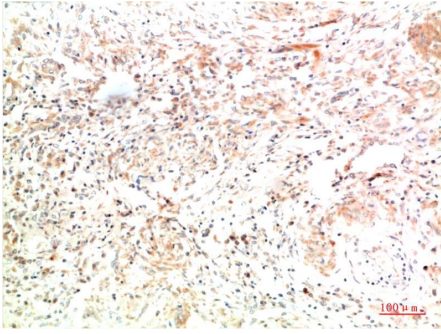
Catalog NO.: EM1372

For research use only.

## Overview

---

Product name	Collagen II (8F6) Mouse Monoclonal antibody
Source	Mouse
Applications	IHC
Species reactivity	Human Mouse Rat
Recommended dilutions	Immunohistochemistry:1/100-200 <b>NOTE: Optimal dilutions should be determined by the end user.</b>
Immunogen	Synthetic Peptide
Species	Human
Storage	PBS with 0.02% sodium azide and 50% glycerol pH 7.4. Store at -20° C. Avoid repeated freeze-thaw cycles.
Isotype	IgG1
Clonality	Monoclonal
Concentration	1 mg/ml
Observed band	142kDa
GeneID (Human)	1280
Human Swiss-Prot No.	P02458
Cellular localization	Secretedextracellular spaceextracellular matrix
Alternative Names	Alpha type II collagen AOM Col2a1 antibody
Background	Collagens are fibrous extracellular matrix proteins with high tensile strength and are the major components of connective tissue such as tendons and cartilage. In cartilage Collagen Type II constitutes the bulk of the fibril. Sensitization with Collagen Type II induces an erosive polyarthritis in rats mice and higher primates which can resemble rheumatoid arthritis and relapsing polychondritis.



Immunohistochemical analysis of paraffin-embedded Human Lung Carcinoma Tissue using Collagen II ( EM1372 ) Mouse mAb diluted at:200.