



# ELK Biotechnology

**SGK1 (4D12) Mouse mAb**

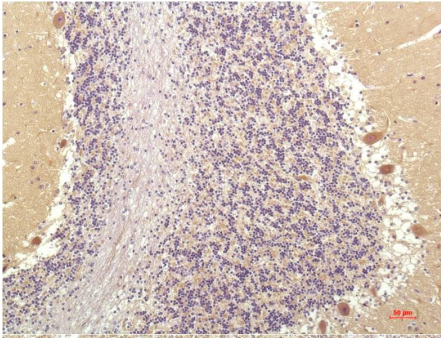
**Catalog NO.: EM1264**

**For research use only.**

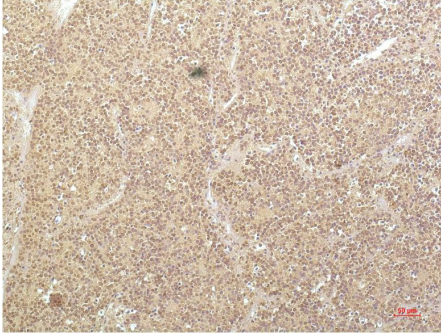
## Overview

---

Product name	SGK1 (4D12) Mouse Monoclonal antibody
Source	Mouse
Applications	<b>IHC</b>
Species reactivity	<b>Human Rat Mouse</b>
Recommended dilutions	<b>Immunohistochemistry:1/100-200</b> <b>NOTE: Optimal dilutions should be determined by the end user.</b>
Immunogen	Synthetic Peptide
Species	Human
Storage	PBS with 0.02% sodium azide and 50% glycerol pH 7.4. Store at -20° C. Avoid repeated freeze-thaw cycles.
Isotype	IgG1
Clonality	Monoclonal
Concentration	1 mg/ml
Observed band	<b>45-60kDa</b>
GeneID (Human)	6446
Human Swiss-Prot No.	O00141
Cellular localization	Cell membrane Cytoplasm Endoplasmic reticulum Membrane Mitochondrion Nucleus
Alternative Names	SGK variant13 serum/glucocorticoid regulated kinase
Background	Serum and glucocorticoid-inducible kinase (SGK) is a serine/threonine kinase closely related to Akt. SGKs rapidly induced in response to a variety of stimuli including serum glucocorticoid follicle stimulating hormone osmotic shock and mineralocorticoids.



Immunohistochemical analysis of paraffin-embedded Human Brain Tissue using SGK1 (EM1264) Mouse mAb diluted at:200.



Immunohistochemical analysis of paraffin-embedded Human Kidney Carcinoma Tissue using SGK1 (EM1264) Mouse mAb diluted at:200.