



# ELK Biotechnology

**STAT1 (12E8) Mouse mAb**

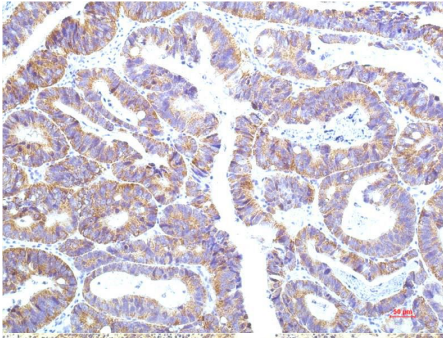
**Catalog NO.: EM1259**

**For research use only.**

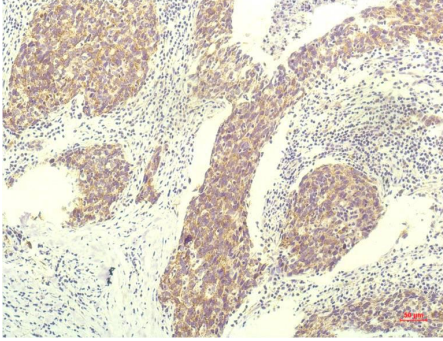
## Overview

---

Product name	STAT1 (12E8) Mouse Monoclonal antibody
Source	Mouse
Applications	IHC
Species reactivity	Human Rat Mouse
Recommended dilutions	Immunohistochemistry:1/100-200 <b>NOTE: Optimal dilutions should be determined by the end user.</b>
Immunogen	Synthetic Peptide
Species	Human
Storage	PBS with 0.02% sodium azide and 50% glycerol pH 7.4. Store at -20° C. Avoid repeated freeze-thaw cycles.
Isotype	IgG1
Clonality	Monoclonal
Concentration	1 mg/ml
Observed band	<b>8491kDa</b>
GeneID (Human)	6772
Human Swiss-Prot No.	P42224
Cellular localization	Cytoplasm Nucleus
Alternative Names	CANDF7 antibody ISGF3 antibody DKFZp686B04100 antibody
Background	STAT1 is a member of the Signal Transducers and Activators of Transcription family of transcription factors. STAT1 is involved in upregulating genes due to a signal by either type I type II or type III interferons.



Immunohistochemical analysis of paraffin-embedded Human Colon Carcinoma Tissue using STAT1 (EM1259) Mouse mAb diluted at:200.



Immunohistochemical analysis of paraffin-embedded Human Breast Carcinoma Tissue using STAT1 (EM1259) Mouse mAb diluted at:200.