



# ELK Biotechnology

**P70 S6 Kinase (1C7) Mouse mAb**

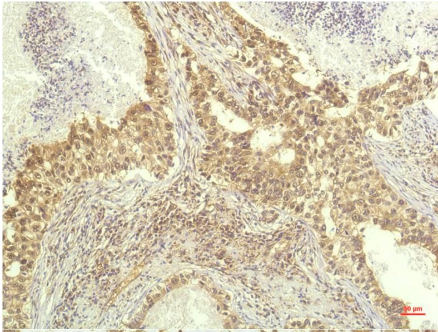
**Catalog NO.: EM1253**

**For research use only.**

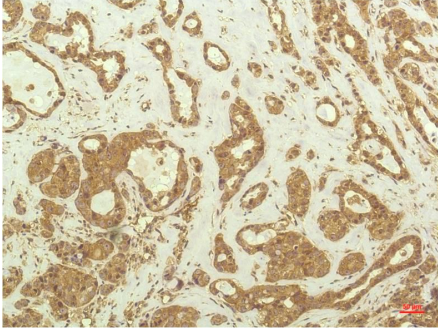
## Overview

---

Product name	P70 S6 Kinase (1C7) Mouse Monoclonal antibody
Source	Mouse
Applications	<b>IHC</b>
Species reactivity	<b>Human Rat Mouse</b>
Recommended dilutions	<b>Immunohistochemistry:1/100-200</b> <b>NOTE: Optimal dilutions should be determined by the end user.</b>
Immunogen	Recombinant Protein
Species	Human
Storage	PBS with 0.02% sodium azide and 50% glycerol pH 7.4. Store at -20° C. Avoid repeated freeze-thaw cycles.
Isotype	IgG1
Clonality	Monoclonal
Concentration	1 mg/ml
Observed band	<b>7085kDa</b>
GeneID (Human)	6198
Human Swiss-Prot No.	P23443
Cellular localization	Cell junction Cytoplasm Membrane Mitochondrion Mitochondrion outer membrane Nucleus Synapse Synaptosome
Alternative Names	S6K1 antibody P70 beta antibody P70 alpha antibody KS6B1 antibody STK14A antibody
Background	p70 S6 kinases are mitogen activated Ser/Thr protein kinases that are required for cell growth and G1 cell cycle progression. Belongs to the protein kinase superfamily. AGC Ser/Thr protein kinase family. S6 kinase subfamily.



Immunohistochemical analysis of paraffin-embedded Human Lung Carcinoma Tissue using P70 S6 Kinase (EM1253) Mouse mAb diluted at:200.



Immunohistochemical analysis of paraffin-embedded Human Breast Carcinoma Tissue using P70 S6 Kinase (EM1253) Mouse mAb diluted at:200.