



# ELK Biotechnology

## Acetyl Lysine Mouse mAb

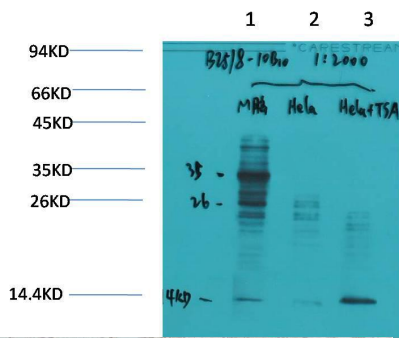
Catalog NO.: EM1191

For research use only.

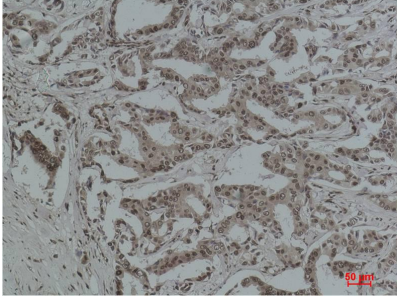
### Overview

---

Product name	Acetyl Lysine Mouse Monoclonal antibody
Source	Mouse
Applications	<b>WB IHC</b>
Species reactivity	<b>ALL</b>
Recommended dilutions	<b>WesternBlot:1/1000-2000</b> <b>Immunohistochemistry:1/200-500</b> <b>NOTE: Optimal dilutions should be determined by the end user.</b>
Immunogen	Purified Protein
Species	N/A
Storage	PBS with 0.02% sodium azide and 50% glycerol pH 7.4. Store at -20° C. Avoid repeated freeze-thaw cycles.
Isotype	IgG1
Clonality	Monoclonal
Concentration	1 mg/ml
Observed band	<b>N/A</b>
GeneID (Human)	N/A
Human Swiss-Prot No.	N/A
Cellular localization	N/A
Alternative Names	Ac K antibody
Background	Acetylation of lysine like phosphorylation of serine threonine or tyrosine is an important reversible modification controlling protein activity. The role of acetylation in intracellular signaling has been inferred from the binding of acetylated peptides by the conserved bromodomain.



Western blot analysis of) Mouse Brain Tissue 2)Hela 3)Hela+TSA Treated with Acetyl Lysine Mouse mAb EM1191 diluted at:2000.



Immunohistochemical analysis of paraffin-embedded Human Breast Carcinoma using Aceylated Lysine (EM1191) Mouse mAb diluted at:500.