



ELK Biotechnology

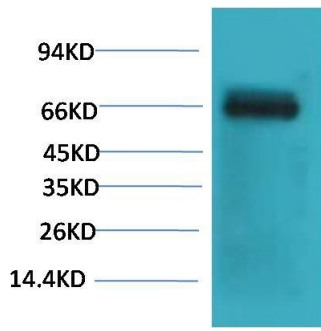
Bovine Serum Albumin Mouse mAb

Catalog NO.: EM1190

For research use only.

Overview

Product name	Bovine Serum Albumin Mouse Monoclonal antibody
Source	Mouse
Applications	WB
Species reactivity	Cow
Recommended dilutions	WesternBlot:1/1000-2000 NOTE: Optimal dilutions should be determined by the end user.
Immunogen	Purified Protein
Species	N/A
Storage	PBS with 0.02% sodium azide and 50% glycerol pH 7.4. Store at -20° C. Avoid repeated freeze-thaw cycles.
Isotype	IgG
Clonality	Monoclonal
Concentration	1 mg/ml
Observed band	66kDa
GeneID (Human)	N/A
Human Swiss-Prot No.	N/A
Cellular localization	N/A
Alternative Names	BSA antibody ALB antibody Albumin antibody HSA antibody PRO0883 antibody Serum Albumin antibody
Background	Bovine serum albumin (also known as BSA or "Fraction V") is a serum albumin protein derived from cows. It is often used as a protein concentration standard in lab experiments. Albumin is a soluble monomeric protein which comprises about one-half of the blood serum protein.



Western blot analysis of Bovine Serum Albumin with Bovine Serum Albumin Mouse mAb EM1190 diluted at:2000.