



ELK Biotechnology

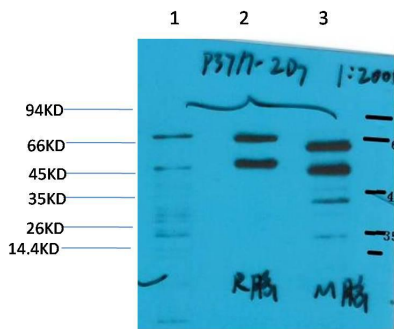
Phosphoserine Mouse mAb

Catalog NO.: EM1189

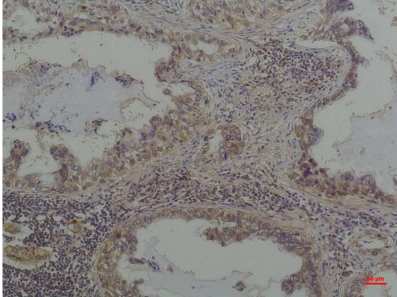
For research use only.

Overview

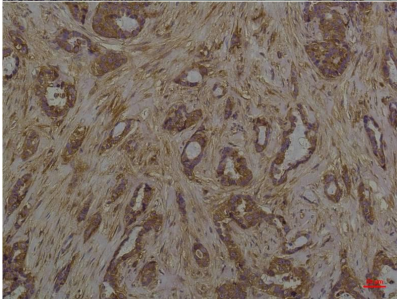
Product name	Phosphoserine Mouse Monoclonal antibody
Source	Mouse
Applications	WB
Species reactivity	All
Recommended dilutions	WesternBlot:1/1000-2000 Immunohistochemistry:1/100-500 NOTE: Optimal dilutions should be determined by the end user.
Immunogen	Purified Protein
Species	N/A
Storage	PBS with 0.02% sodium azide and 50% glycerol pH 7.4. Store at -20° C. Avoid repeated freeze-thaw cycles.
Isotype	IgG1
Clonality	Monoclonal
Concentration	1 mg/ml
Observed band	N/A
GeneID (Human)	N/A
Human Swiss-Prot No.	N/A
Cellular localization	N/A
Alternative Names	N/A
Background	N/A



Western blot analysis of) HeLa 2)Rat Brain Tissue 3) Mouse Brain Tissue with Phosphoserine Mouse mAb EM1189 diluted at:2000.



Immunohistochemical analysis of paraffin-embedded Human Lung Carcinoma using Phosphoserine (EM1189) Mouse mAb diluted at:200.



Immunohistochemical analysis of paraffin-embedded Human Breast Carcinoma using Phosphoserine (EM1189) Mouse mAb diluted at:200.