



# ELK Biotechnology

## CBARA1/MICU1 Mouse mAb

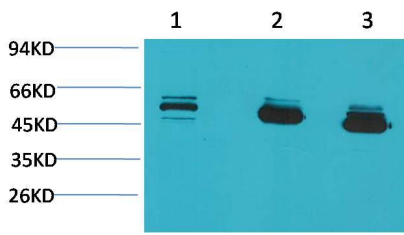
Catalog NO.: EM1187

For research use only.

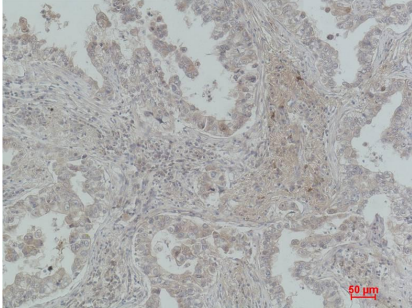
### Overview

---

Product name	CBARA1/MICU1 Mouse Monoclonal antibody
Source	Mouse
Applications	<b>WB IHC</b>
Species reactivity	<b>Human Rat Mouse</b>
Recommended dilutions	<b>WesternBlot:1/1000-2000</b> <b>Immunohistochemistry:1/100-200</b> <b>NOTE: Optimal dilutions should be determined by the end user.</b>
Immunogen	Recombinant Protein
Species	Human
Storage	PBS with 0.02% sodium azide and 50% glycerol pH 7.4. Store at -20° C. Avoid repeated freeze-thaw cycles.
Isotype	IgG1
Clonality	Monoclonal
Concentration	1 mg/ml
Observed band	<b>55kDa</b>
GenelD (Human)	10367
Human Swiss-Prot No.	Q9BPX6
Cellular localization	Mitochondrion inner membrane
Alternative Names	ara CALC antibody Allergen Hom s4 antibody MICU1 antibody EFHA3 antibody FLJ12684 antibody
Background	CBARA1/MICU1 is a mitochondrial protein associated to the mitochondrial inner membrane that is comprised of two EF hand helix-loop-helix motifs. Key regulator of mitochondrial calcium uptake required for calcium entry into mitochondrion.



Western blot analysis of) MCF7 2)Mouse Brain Tissue 3)Rat Brain Tissue with CBARA1/MICU1 Mouse mAb EM1187 diluted at:2000.



Immunohistochemical analysis of paraffin-embedded Human Lung Carcinoma using CBARA1/MICU1 (EM1187) Mouse mAb diluted at:200.