



# ELK Biotechnology

CREB Mouse mAb

Catalog NO.: EM1185

For research use only.

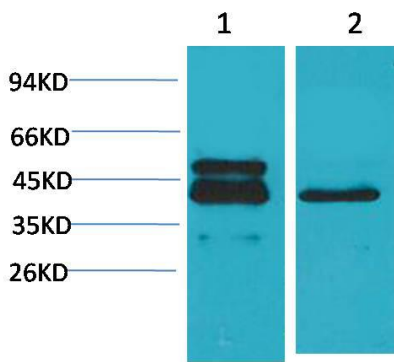
## Overview

---

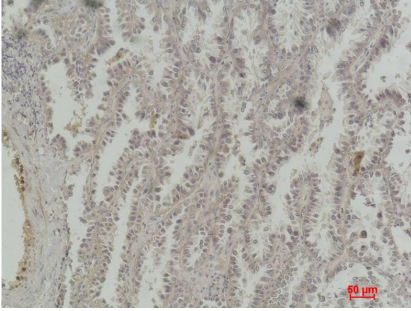
Product name	CREB Mouse Monoclonal antibody
Source	Mouse
Applications	<b>WB IHC</b>
Species reactivity	<b>Human Mouse</b>
Recommended dilutions	<b>WesternBlot:1/500-1000</b> <b>Immunohistochemistry:1/100-200</b> <b>NOTE: Optimal dilutions should be determined by the end user.</b>
Immunogen	Recombinant Protein
Species	Human
Storage	PBS with 0.02% sodium azide and 50% glycerol pH 7.4. Store at -20° C. Avoid repeated freeze-thaw cycles.
Isotype	IgG1
Clonality	Monoclonal
Concentration	1 mg/ml
Observed band	<b>43kDa</b>
GenelD (Human)	1385
Human Swiss-Prot No.	P16220
Cellular localization	Nucleus
Alternative Names	Cyclic AMP-responsive element binding protein antibody MGC9284 antibody CREB1 antibody

## Background

CREB (cAMP response element-binding protein) is a cellular transcription factor. This protein binds the cAMP response element (CRE) a sequence present in many viral and cellular promoters. CREB is closely related in structure and function to CREM (cAMP response element modulator) and ATF-1 (activating transcription factor-1) proteins. CREB proteins are expressed in many animals.



Western blot analysis of A431 2)3T3 with CREB Mouse mAb EM1185 diluted at:2000.



Immunohistochemical analysis of paraffin-embedded Human Lung Carcinoma using CREB (EM1185) Mouse mAb diluted at:200.