



ELK Biotechnology

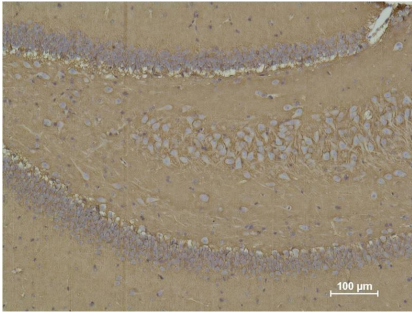
CD15 Mouse mAb

Catalog NO.: EM1105

For research use only.

Overview

Product name	CD15 Mouse Monoclonal antibody
Source	Mouse
Applications	IHC
Species reactivity	Human
Recommended dilutions	Immunohistochemistry:1/200-500 NOTE: Optimal dilutions should be determined by the end user.
Immunogen	Synthetic Peptide
Species	Human
Storage	PBS with 0.02% sodium azide and 50% glycerol pH 7.4. Store at -20° C. Avoid repeated freeze-thaw cycles.
Isotype	IgG1
Clonality	Monoclonal
Concentration	1 mg/ml
Observed band	N/A
GeneID (Human)	2526
Human Swiss-Prot No.	P22083
Cellular localization	Golgi apparatus Membrane
Alternative Names	ELAM-1ELFT FCT3A Fuc-TIV FUT4 Galactoside 3 L fucosyltransferase
Background	CD15 (3-fucosyl-N-acetyl-lactosamine) is a cluster of differentiation antigen - an immunologically significant molecule. CD15 is a carbohydrate adhesion molecule (not a protein) that can be expressed on glycoproteins glycolipids and proteoglycans.



Immunohistochemical analysis of paraffin-embedded Rat Brain Tissue using CD5 (EM1105) Mouse mAb diluted at:500.