



# ELK Biotechnology

## Histone H3(di methyl K27) Monoclonal antibody

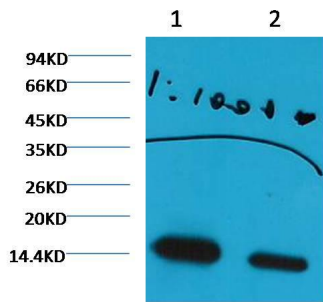
Catalog NO.: EM1101

For research use only.

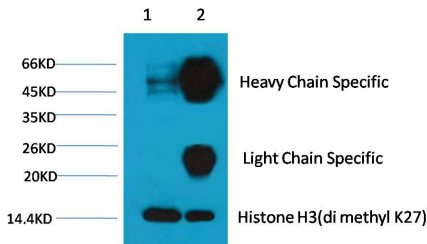
### Overview

---

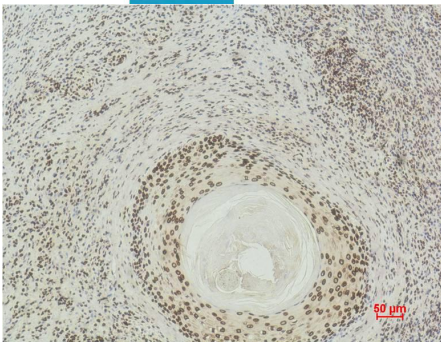
|                       |  |
|-----------------------|--|
| Product name          | Histone H3(di methyl K27) Mouse Monoclonal antibody  |
| Source                | Mouse  |
| Applications          | <b>WB IHC</b>  |
| Species reactivity    | <b>Human Rat Mouse</b>   |
| Recommended dilutions | <b>WesternBlot:1/1000-3000</b><br><b>Immunoprecipitation:1/200</b><br><b>Immunohistochemistry:1/200-500</b><br><b>NOTE: Optimal dilutions should be determined by the end user.</b>  |
| Immunogen             | Synthetic Peptide  |
| Species               | Human  |
| Storage               | PBS with 0.02% sodium azide and 50% glycerol pH 7.4.<br>Store at -20° C. Avoid repeated freeze-thaw cycles.  |
| Isotype               | IgG1   |
| Clonality             | Monoclonal   |
| Concentration         | 1 mg/ml  |
| Observed band         | <b>15kDa</b>   |
| GeneID ( Human )      | 8290   |
| Human Swiss-Prot No.  | P68431   |
| Cellular localization | NucleusChromosome  |
| Alternative Names     | H3 histone antibody HIST1H3A antibody Histone cluster H3a antibody   |
| Background            | Histone H3 is one of the five main histone proteins involved in the structure of chromatin in eukaryotic cells. Core component of nucleosome. Nucleosomes wrap and compact DNA into chromatin limiting DNA accessibility to the cellular machineries which require DNA as a template. Histones thereby play a central role in transcription regulation DNA repair DNA replication and chromosomal stability. |



Western blot analysis of HeLa with Histone H3 (di methyl K27) (1E10) Mouse MAb diluted at: 1000 2):3000



1、 Input: HeLa Cell Lysate 2、 IP product: IP dilute:200 Western blot analysis: primary antibody : EM1101:2000 Secondary antibody: Goat anti-Mouse IgG(H+L) (S001):10000



Immunohistochemical analysis of paraffin-embedded Human Skin using Histone H3(di methyl K27) (EM1101) Mouse mAb diluted at:500.