



ELK Biotechnology

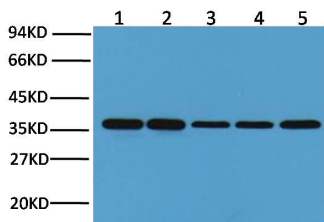
GAPDH Mouse mAb

Catalog NO.: EM1028

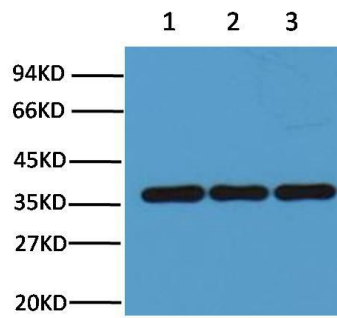
For research use only.

Overview

Product name	GAPDH Mouse Monoclonal antibody
Source	Mouse
Applications	WB IHC IF
Species reactivity	Human Rat Mouse Monkey Dog Chicken Hamster Rabbit Pig Sheep Insect Yeast
Recommended dilutions	WesternBlot:1/5000 Immunohistochemistry:1/200 NOTE: Optimal dilutions should be determined by the end user.
Immunogen	Synthetic Peptide
Species	Human
Storage	PBS with 0.02% sodium azide and 50% glycerol pH 7.4. Store at -20° C. Avoid repeated freeze-thaw cycles.
Isotype	IgG1
Clonality	Monoclonal
Concentration	1 mg/ml
Observed band	37kDa
GeneID (Human)	2597
Human Swiss-Prot No.	P04406
Cellular localization	CytoplasmCytoskeletonMembraneNucleus
Alternative Names	N/A
Background	Glyceraldehyde 3 phosphate dehydrogenase (GAPDH) is well known as one of the key enzymes involved in glycolysis. GAPDH is constitutively expressed in almost all tissues at high levels therefore antibodies against GAPDH are useful as loading controls for Western Blotting. Some physiological factors such as hypoxia and diabetes increase GAPDH expression in certain cell types.



Western blot analysis of Hela (1) Rat brain (2) Rabbit Muscle(3) Sheep Muscle(4) and Mouse brain (5) with GAPDH mouse mAb(2B8) diluted at:10000.



Western blot analysis of Chicken Muscle (1) Hamster Lung (2) Pig Heart(3) with GAPDH mouse mAb(2B8) diluted at:10000.